

# Welcome!



- Welcome to the Virtual Meeting
- Please MUTE yourself until you have a question
- If you don't feel comfortable using audio, you can provide a question in the chat area
- Please be respectful of others
- A brief overview will begin at 5:40pm followed by Q&A
- This meeting is being recorded and will be available on [www.modesiowa.com](http://www.modesiowa.com)





# Virtual Public Information Meeting

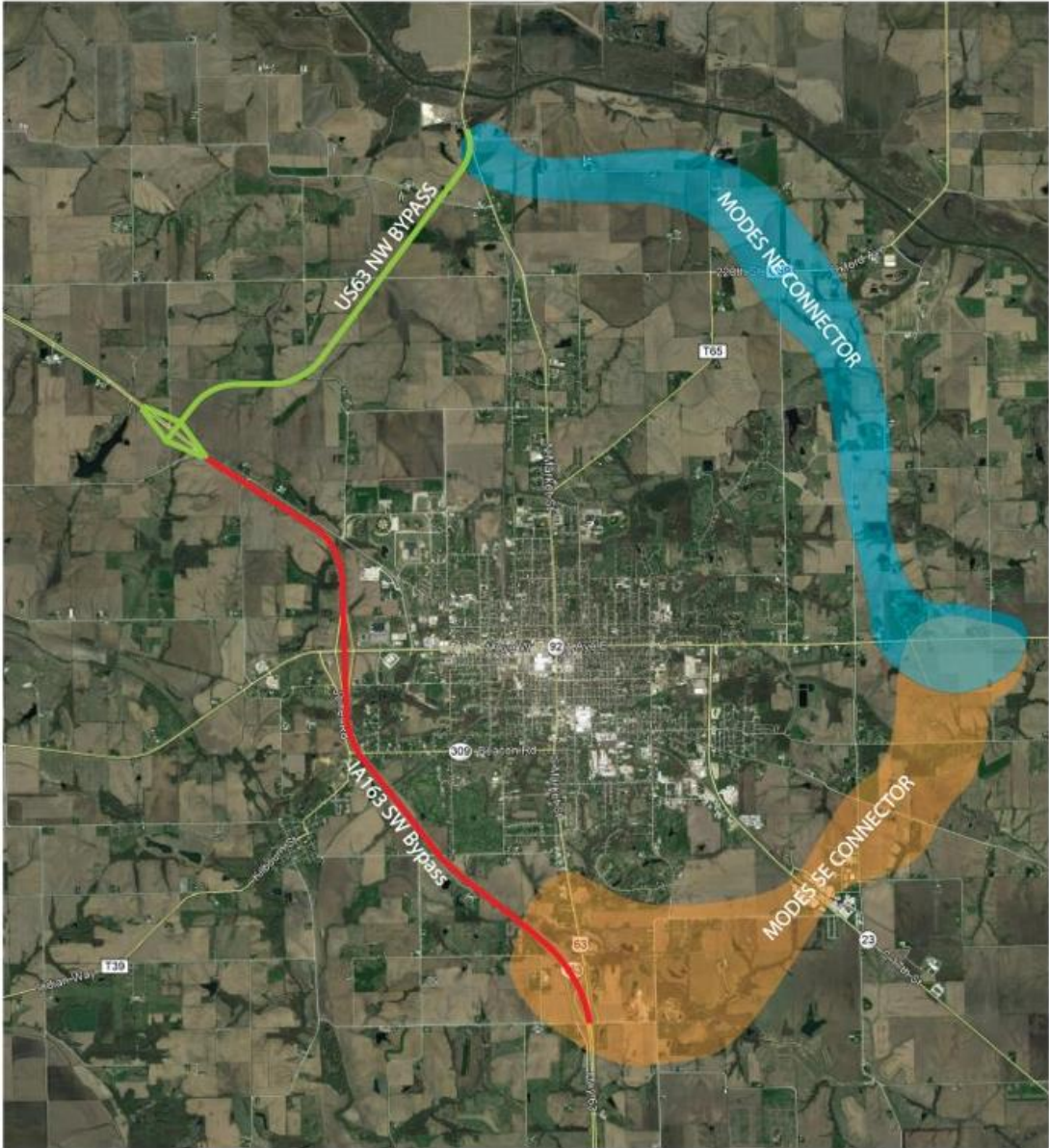
May 11, 2020 | 5:30-7:00pm

# What is MODES?

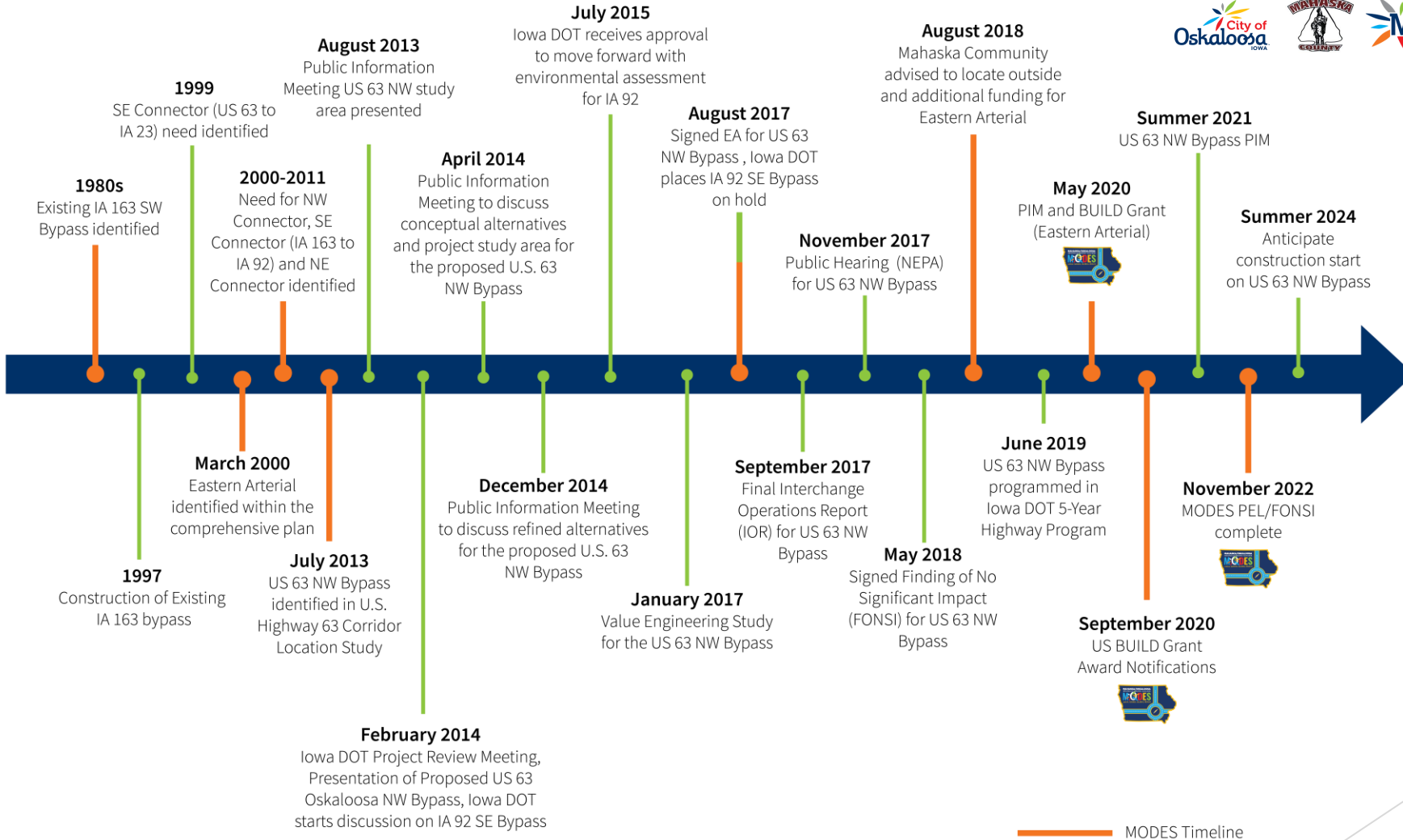


- The Mahaska Oskaloosa Delivering Economic Success (MODES) study includes both NE and SE roadways
  - Local roadways would connect to the State Primary System
- Iowa DOT conducted a **different** IA 92 SE Bypass Study
- Iowa DOT IA 92 SE Oskaloosa Bypass would have been a part of the State Primary System
- For more information on Iowa DOT [IA 92 SE Bypass Study](#)
- Iowa DOT started a desktop review for the IA 92 SE Bypass, but placed on HOLD
  - Limited resources
  - Competing priorities
  - Limited shelf life for studies
  - Focus on US 63 NW Bypass

# Project Area



# Timeline



# US BUILD Grant Program



- The “Better Utilizing Investments to Leverage Development”
- BUILD Transportation Discretionary Grant Program
- Awarded \$7.9B in 11 rounds to fund projects that have a significant local and regional impact
- Opportunity for multi-jurisdictional projects to be funded outside of traditional USDOT programs
- BUILD can fund construction and PLANNING projects
- BUILD has awarded \$2.9B in Federal funding to **rural** projects
- Merit-based selection process
- 2020 BUILD Grant to award minimum of \$15M to Planning Grant Applications nationwide

# Project Description

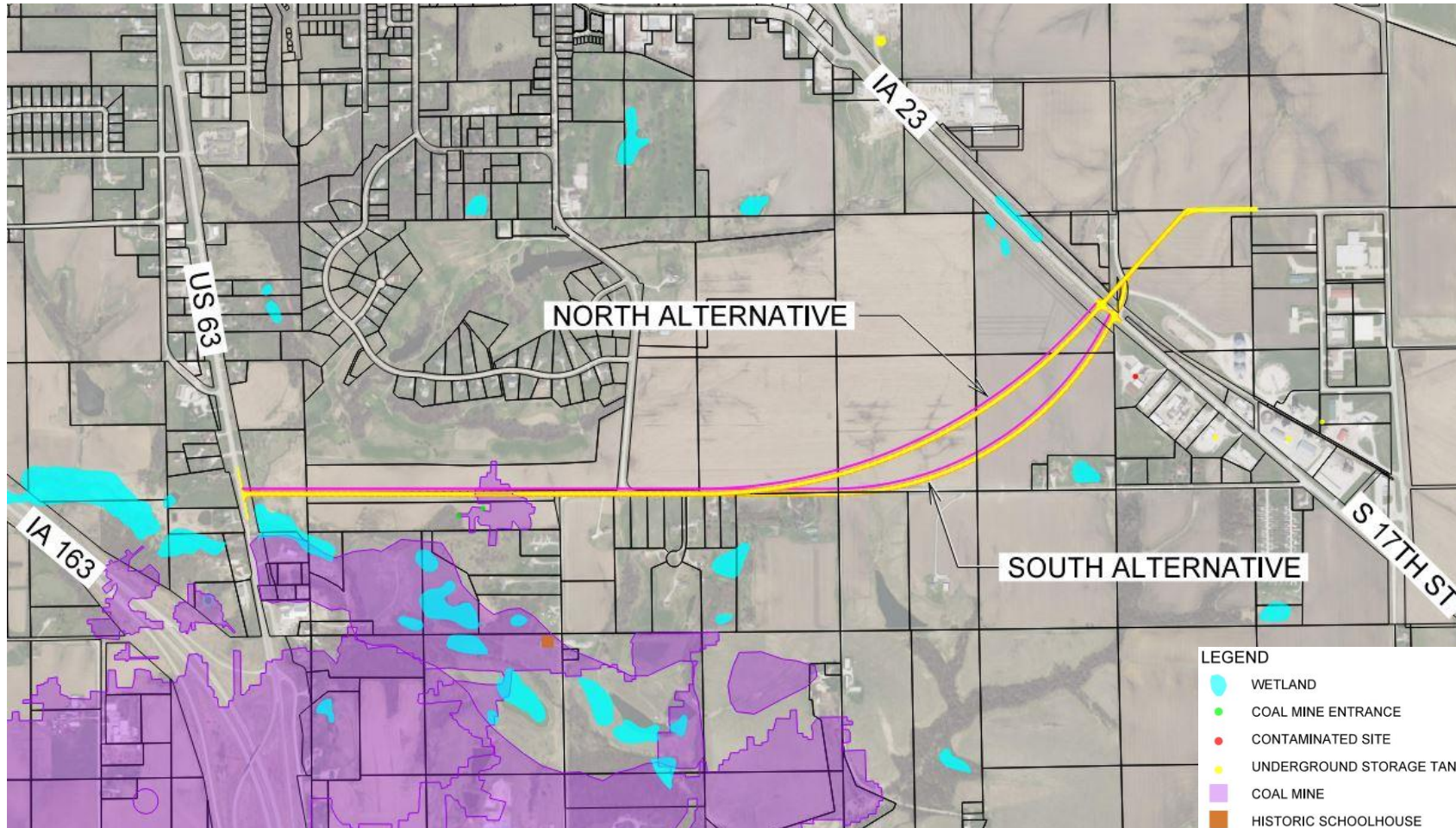
- BUILD Grant Application
  - Planning and Environmental Linkages (PEL)
    - Collaborative approach to transportation decision making
    - Identify potential improvements to the transportation network
    - Smooth transition to National Environmental Policy Act (NEPA)
- Environmental Assessment (EA)
  - Identifying, estimating, and evaluating impacts to mitigate negative effects
- Eastern Connectors
  - MODES Southeast for IA 92 (IA 163 - US 63 - IA 23 - IA 92)
  - MODES Northeast for US 63 (IA 92 – US 63)





# Preliminary Desktop Analysis

- US 63 to IA 23 Connection identified as a priority since 1990's
- Mitigate Heavy Vehicle traffic through residential neighborhoods





# Questions?

Michael Schrock Jr.

City Manager  
City of Oskaloosa  
220 S. Market Street  
Oskaloosa, IA 52577  
641.673.9431

[Michael.Schrock@oskaloosaiowa.org](mailto:Michael.Schrock@oskaloosaiowa.org)

Andrew McGuire, PE

Mahaska County Engineer  
Mahaska County  
2074 Old Hwy 163  
Oskaloosa, IA 52577  
641.672.2897

[McGuire@mahaskacounty.org](mailto:McGuire@mahaskacounty.org)

Beth Danowsky

Chair, Business Development Committee  
Mahaska Chamber & Development Group  
222 First Avenue East  
Oskaloosa, IA 52577  
641.673.2058

[Beth.Danowsky@musco.com](mailto:Beth.Danowsky@musco.com)

More information and comments at [www.modesiowa.com](http://www.modesiowa.com)

